

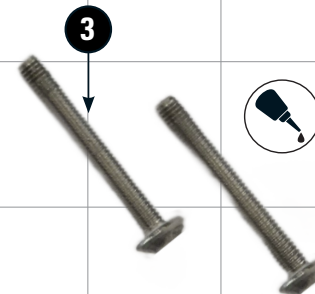
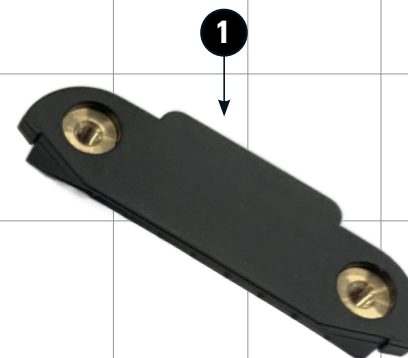
USB LADEBOX

Charging Box USB | Boîte de chargement USB | Box di ricarica USB | Caja de carga USB

Artikel-Nr.: 21179-002



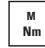



Je nach Navigationsgerät muss das Gerät nach einer Tiefenentladung vorgeladen werden.
 Depending on the navigation device, the device must be precharged after a deep discharge.
 Selon l'appareil de navigation, l'appareil doit être rechargé après une décharge profonde.



LEGENDE/KEY/FILE LÉGENDE

-  **Anbau Tipp**
Fitting tip
Astuce de montage
-  **Achtung**
Attention
Attention
-  **Vergrößerung**
Magnification
Grossissement
-  **Montagepaste**
Fitting lubricant
Lubrifiant de montage

-  **Schraube**
Screw
Vis
-  **Schraubensicherung**
Thread locking fluid
Freinfilets
-  **Drehmoment**
Torque
Torque
-  **Reiniger**
Cleaner
Nettoyant

#	Bauteil component composant	DE Die Farben der Abbildungen dienen nur der Veranschaulichung. EN The colors are for illustrating purposes only. FR Les couleurs utilisées sont à titre indicatif seulement.	DIN	ISO	Menge quantity quantité
1	Adapterstück / adapter piece				1
2	USB Ladebox / charging Box USB				1
3	Linsenkopfschrauben / lens head screw M3 x 28		7985 A2	7380A2	2
4	Schraubensicherung / thread locking fluid				1

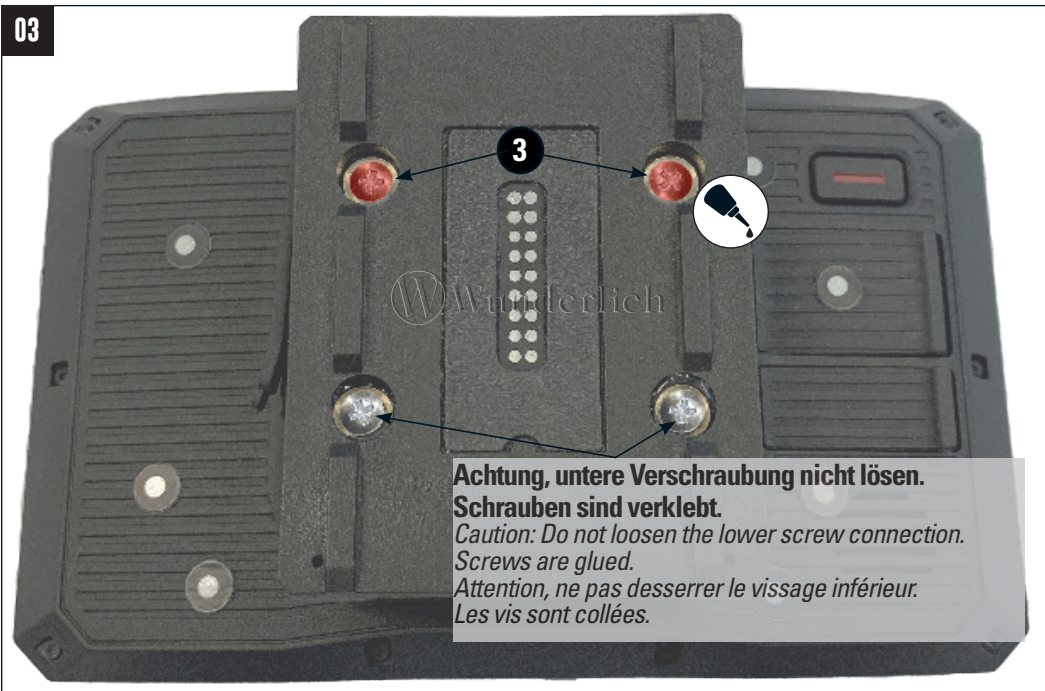
01



02

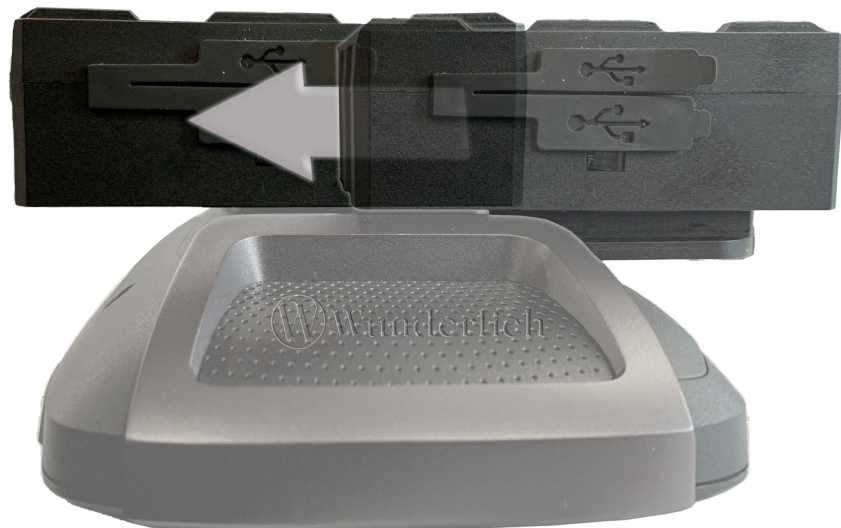


03

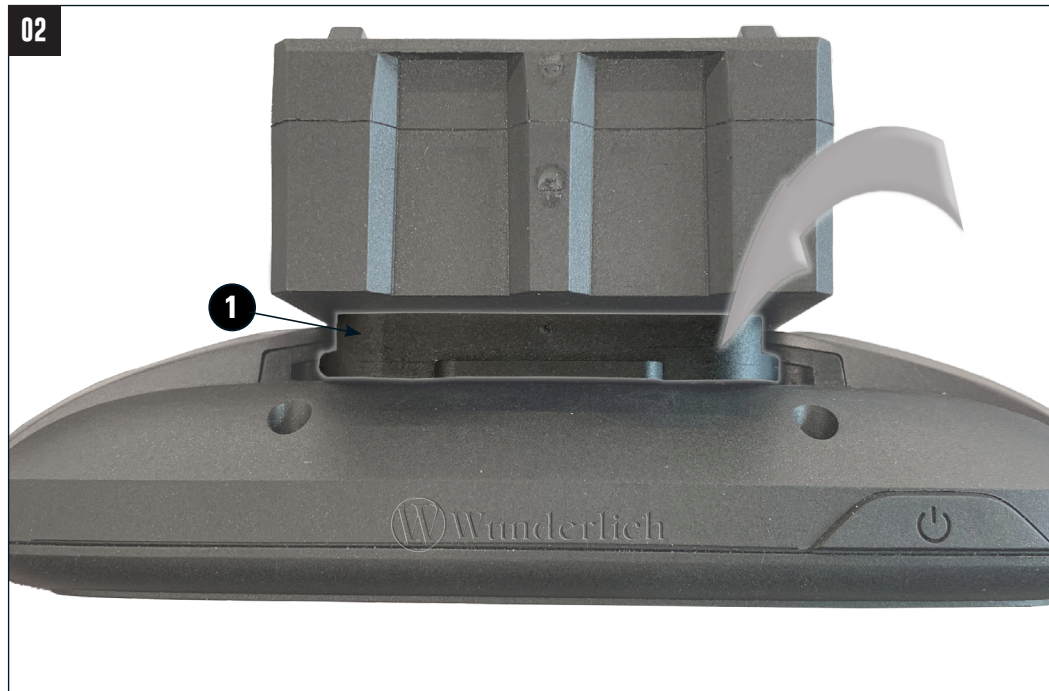


**Achtung, untere Verschraubung nicht lösen.
Schrauben sind verklebt.**
*Caution: Do not loosen the lower screw connection.
Screws are glued.*
*Attention, ne pas desserrer le vissage inférieur.
Les vis sont collées.*

01



02



03

