







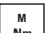

BREMSHEBELVERGRÖßERUNG

Brake lever enlarger | Agrandisseur de levier de frein | Ingranditore leva freno | Ampliador de palanca de freno

Art.-Nr: 90510-002

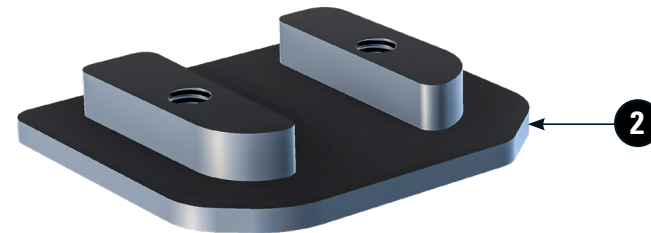


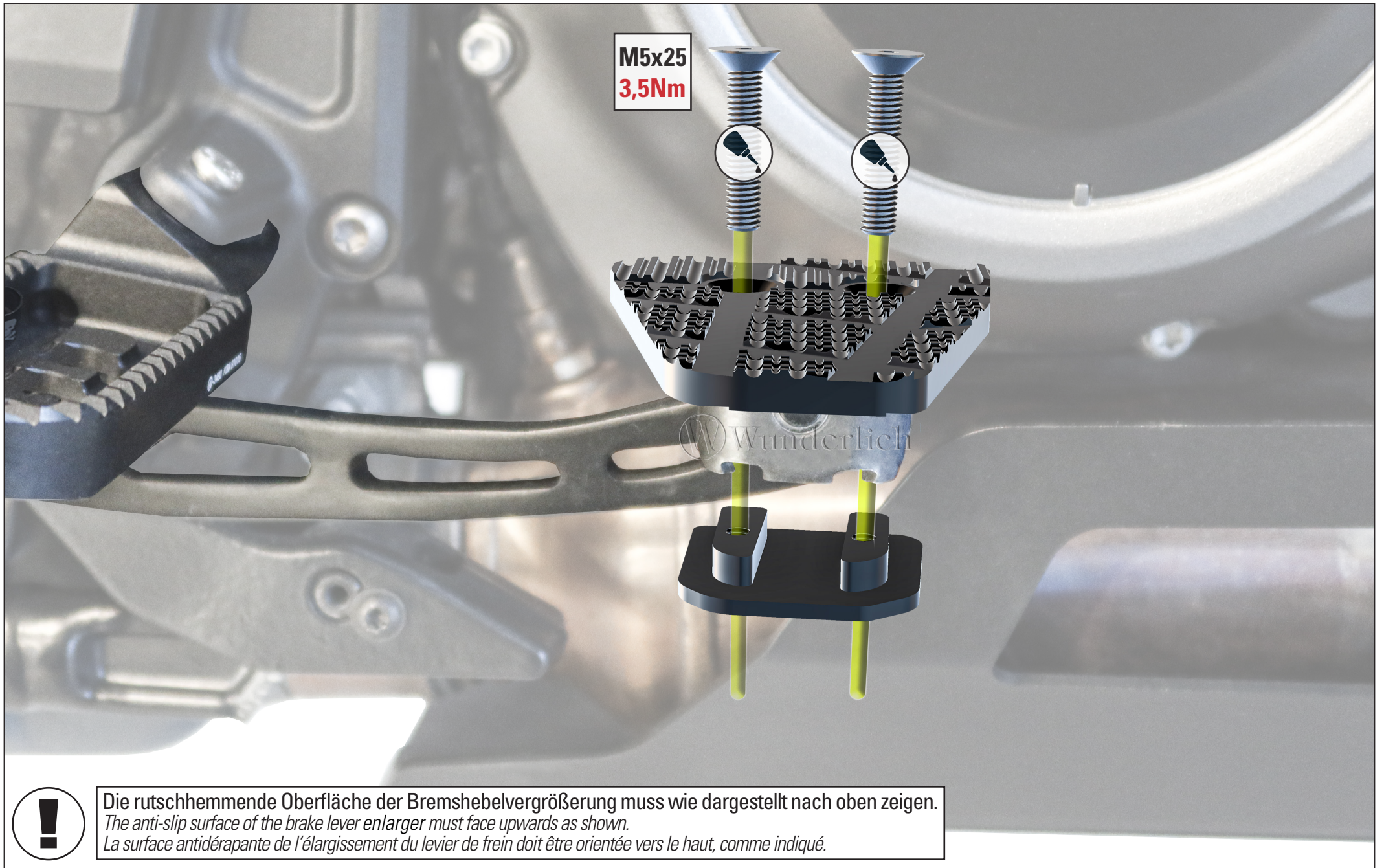
LEGENDE / Key / file Légende

-  **Anbau Tipp**
Fitting tip
Astuce de montage
-  **Achtung**
Attention
Attention
-  **Vergrößerung**
Magnification
Grossissement
-  **Montagepaste**
Fitting lubricant
Lubrifiant de montage
-  **Schraube**
Screw
Vis
-  **Schraubensicherung**
Thread locking fluid
Freinfilets
-  **Drehmoment**
Torque
Torque
-  **Reiniger**
Cleaner
Nettoyant



#	Bauteil component composant	DE Die Farben der Abbildungen dienen nur der Veranschaulichung. EN The colors are for illustrating purposes only. FR Les couleurs utilisées sont à titre indicatif seulement.	DIN	ISO	Menge quantity quantité
1	Bremshebelvergrößerung / Brake lever enlarger				1
2	Klemmblech / Protective plate				1
3	Senkkopfschraube / countersunk screw M5x25		7991	10642	2
4	Schraubensicherung / Thread locking fluid				1





M5x25
3,5Nm

Wunderlich



Die rutschhemmende Oberfläche der Bremshebelvergrößerung muss wie dargestellt nach oben zeigen.
The anti-slip surface of the brake lever enlarger must face upwards as shown.
La surface antidérapante de l'élargissement du levier de frein doit être orientée vers le haut, comme indiqué.